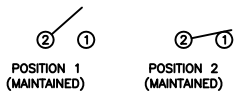


SCHEMATIC



SPECIFICATIONS

FUNCTION:
1P1T OFF-ON

RATINGS:
ANSI/UL 1054 and CAN/CSA C22.2 No. 55 (E194579):
10A 125VAC [UR, cUR]
NOM-003-SCFI-2000 (200801C11357):
10A 125V~ [NOM]
DIN 61058-1/VDE 0630-1:2003-03; EN 61058-1:2002 (4001769):
6A 250V~ 1E4 μ T85 [VDE]

CONTACT RESISTANCE:
Initial: 35mΩ Max. at 50VAC

INSULATION RESISTANCE:
100MΩ Min. at 500VAC

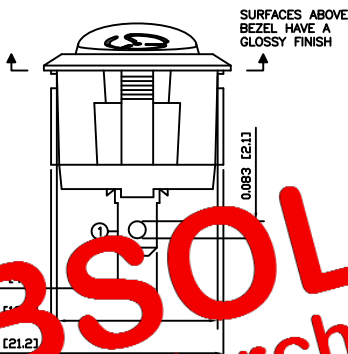
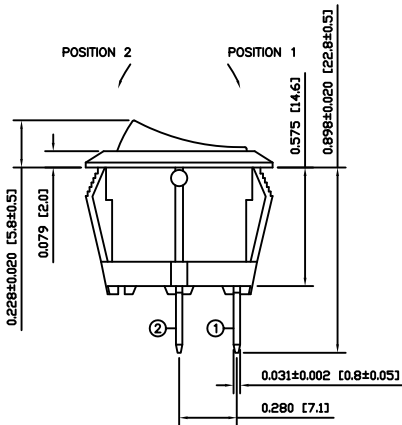
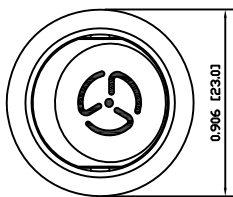
DIELECTRIC STRENGTH:
1,500VAC For 1 Minute

ELECTRICAL LIFE:
6,000 Cycles [UR, cUR, NOM]
10,000 Cycles [VDE]

TEMPERATURE:
Operating: -20°C to 105°C [UR, cUR, NOM]
Operating: -20°C to 85°C [VDE]

PLASTIC FLAMMABILITY:
Glow Wire Ignition Temperature (GWIT): >750°C
Glow Wire Flammability Index (GWFI): >850°C

APPROVALS:
UL cUL TEMA NOH CE RoHS COMPLIANT



OBSOLETE
March 2015

COLORS AND MARKINGS

BODY:
White (Z07)
[38-White Plastic]

ACTUATOR:
White (Z07)
[38-White Plastic]

MARKINGS:
Fan (Z57)

MARKING COLOR:
Blue (Z18)

MATERIALS

BODY:
Polyamide 6/6 (PA66), UL94 V-0
Asia International 6010F

ACTUATOR:
Polyamide 6/6 (PA66), UL94 V-0
Asia International 6010F

SPRING:
Steel

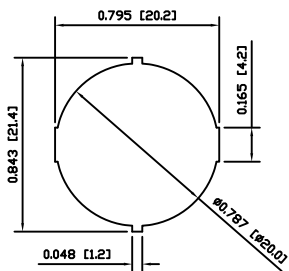
PLUNGER:
Polyamide 6/6 (PA66), UL94 V-2

MOBILE CONTACT:
Silver Plated Copper

CONTACT PADS:
Silver Alloy Clad Copper (AgSnO2In203(10)/Cu)

TERMINALS:
Silver Plated Copper

SUGGESTED PANEL CUTOUT



ACTUATOR	A	09/06/30	CAB
BODY	A	09/06/30	CAB
COLORS	A	10/01/19	CAB
MATERIALS	A	09/06/30	CAB
SPECIFICATIONS	A	09/06/30	CAB
REFERENCE	REV.	DATE	BY

THE INFORMATION CONTAINED IN THIS DOCUMENT IS PROPRIETARY TO E-SWITCH AND IS NOT TO BE COPIED OR TRANSFERRED

A	INITIAL RELEASE	18796	10/01/19	CAB
REV.	DESCRIPTION	PCR	DATE	DRAWN BY

DIMENSIONS	
INCHES [MILLIMETERS]	
GENERAL TOLERANCES	
±0.008 [±0.2] / ±1'	
SCALE	PROJECTION
DRAWING NOT TO SCALE	1st Angle

RRG3813Z07Z07Z18Z57-F1			
SCALE	DRAWING NUMBER	DATE	REVISION
DRAWING NOT TO SCALE	38-RRG3S00026	JANUARY 19, 2010	A